

# Website customization using the .sitepref form

[About the .sitepref form](#)

[Choosing an interface](#)

[Standard Templates](#)

[Mobile Templates](#)

[ScreenReader Templates](#)

[Specifying the page layout](#)

[Specifying page colors and fonts](#)

[Changing the default page images](#)

[Testing your customization](#)

---

## About the .sitepref form

You can customize how your users experience your website using the [.sitepref](#) form. This form is located in the site container in WWW.

Users can override the .sitepref form settings through their personal preferences if they have the correct options configured on their User Information form.

[Top](#)

---

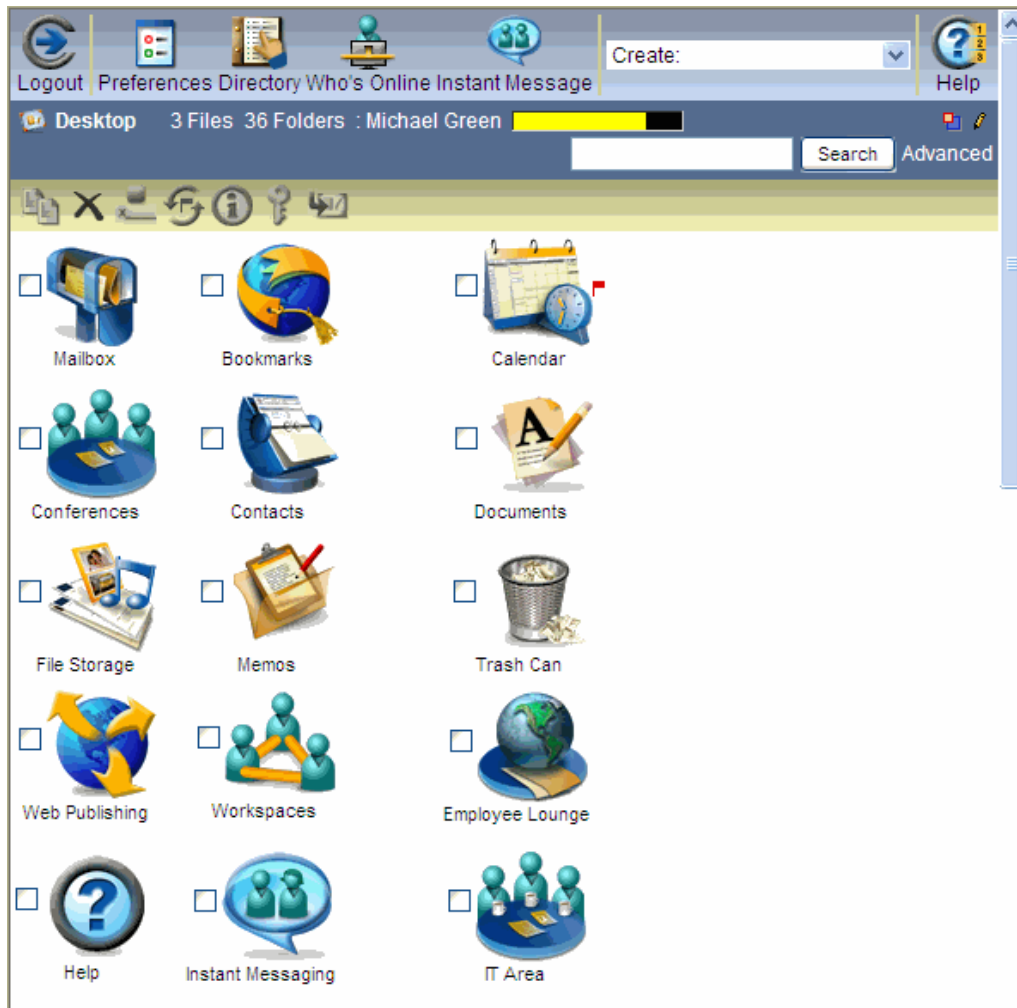
## Choosing an interface

The template sets in WWW/Template Sets provide the default interfaces that ship with FirstClass. Choose the interface you want at "Primary web interface" on the Display tab.

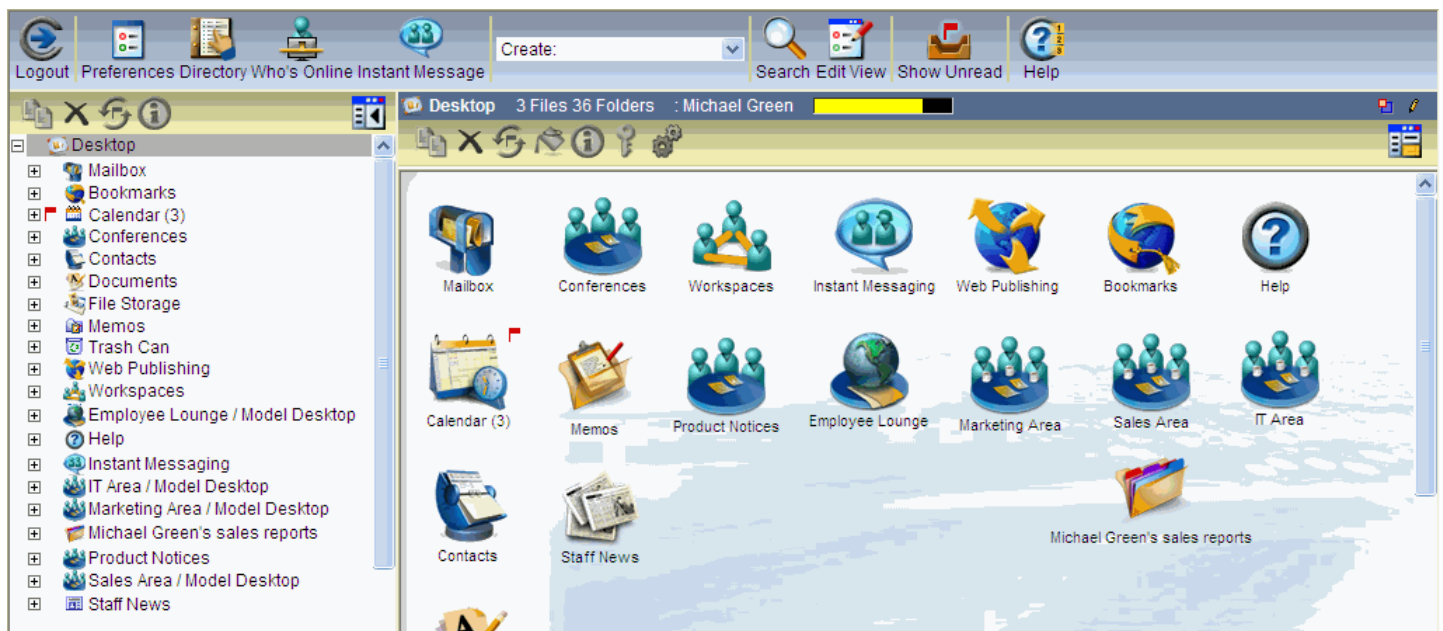
## Standard Templates

By default, these are the templates that are used by FirstClass. They support both the classic web interface and the enhanced interface.

The classic interface looks something like this:



The enhanced interface more closely resembles the FirstClass client interface, providing for exact icon positioning and a framed window when in split-view mode:

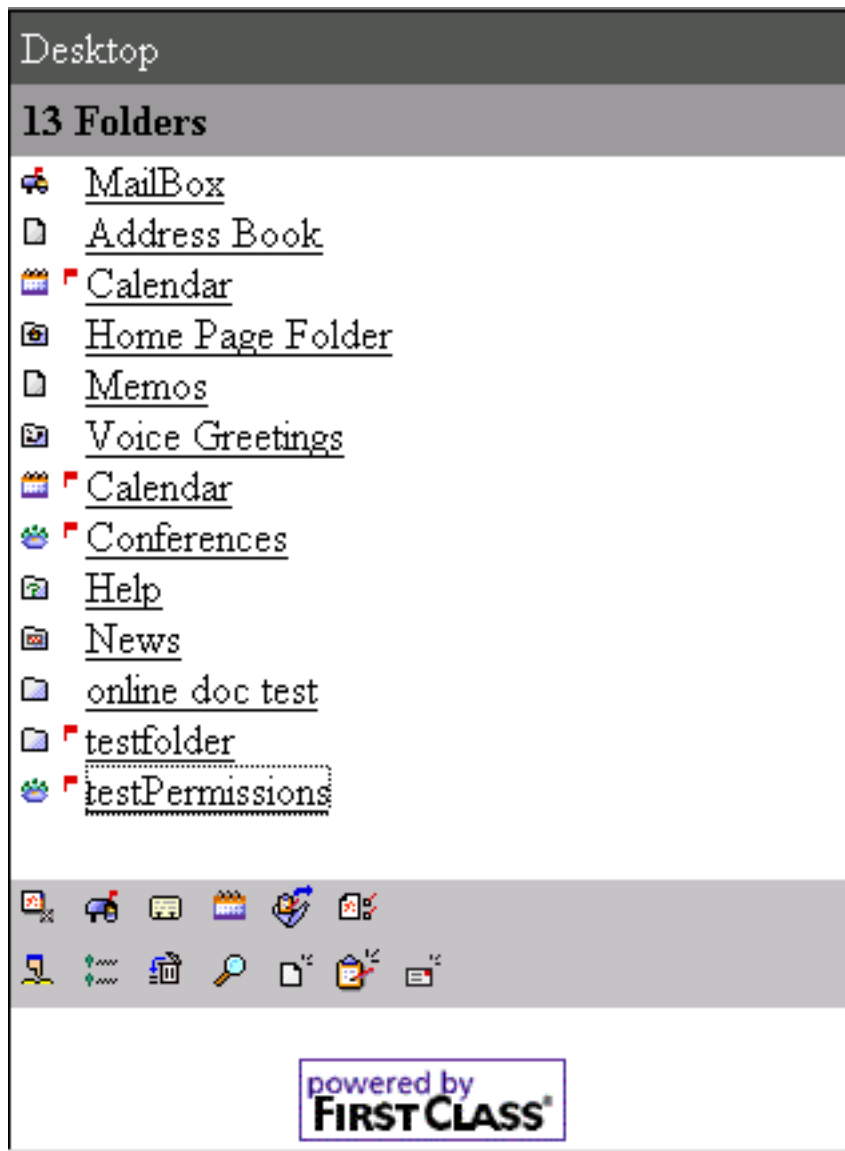


## Mobile Templates

The mobile templates provide the view users see when they log in using a mobile device. This web client is built on lightweight HTML and focuses more on links and text rather than on complex graphical interfaces.

The mobile web client supports the most common mobile browsers.

The mobile interface looks something like this:



## ScreenReader Templates

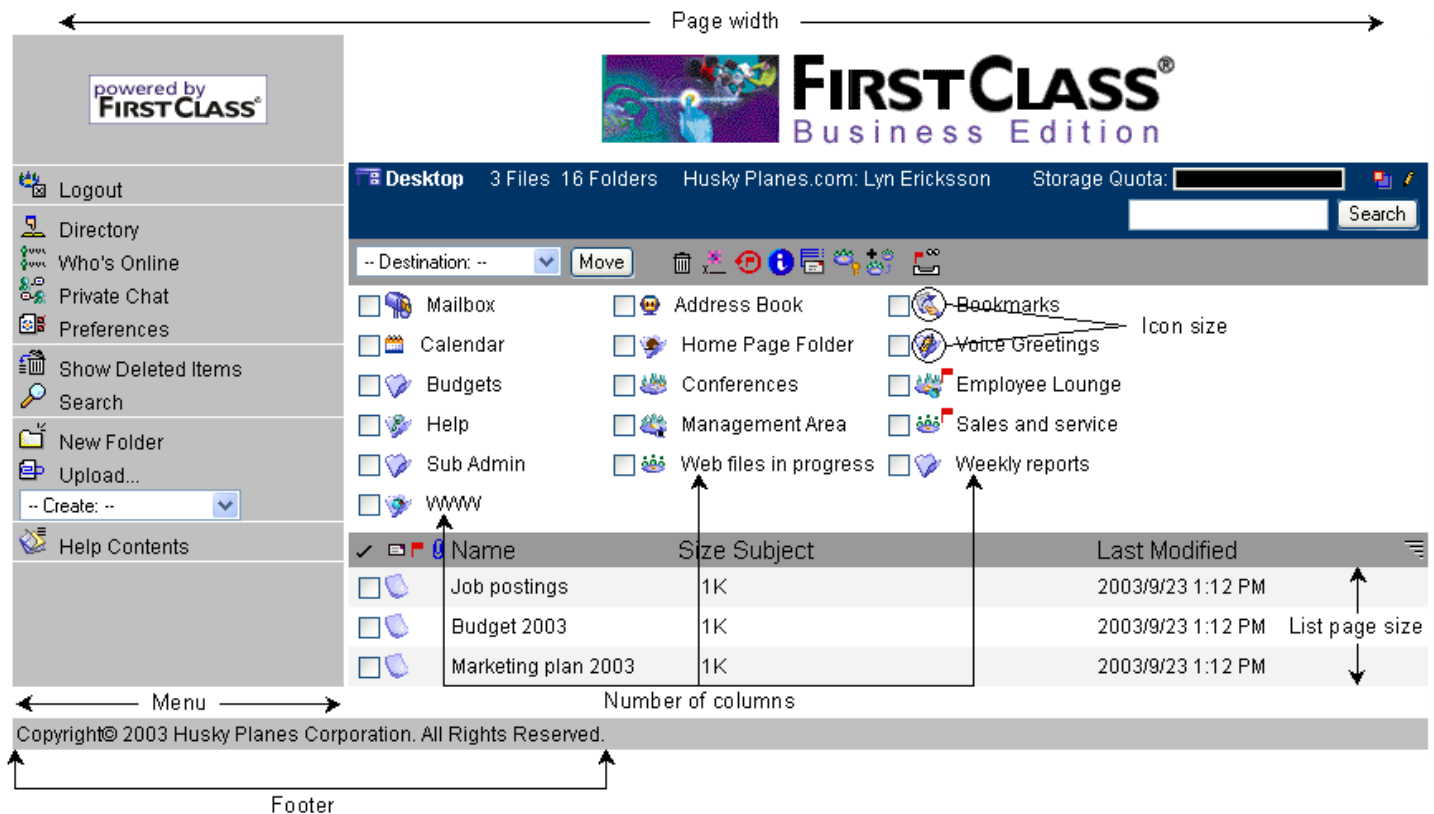
The screenreader templates support screen reader software for the visually impaired (for example, JAWS). Visually, this interface is similar to the mobile interface.

[Top](#)

---

## Specifying the page layout

The Display tab also controls layout elements such as the location and appearance of the menu. Here are areas affected by this tab:



[Top](#)

## Specifying page colors and fonts

The Appearance tab lets you choose preset color/font combinations at "Themes". If you choose Custom, you can use the Colors and Fonts subtabs to create your own combinations.

The Colors subtab controls parts of the page such as toolbars. The Fonts subtab lets you choose font family, size, and color for various things such as section titles on forms. All colors are set with standard RGB numbers.

[Top](#)

## Changing the default page images

The Images tab controls what images are displayed on your website. FirstClass ships with default logos and banners that are specified on this tab.

If you decide to put custom images in this location (instead of placing them at the site or cluster level) to display on your website, this is how Internet Services looks for them (in no particular order):

- the name of the image or resource starting with a tilde (~) (for example, ~image.jpg)

Internet Services looks in the Web Publishing folder located on the user's Desktop. All images in this folder must have a valid extension (for example, .gif, .png, or .jpg) for them to be displayed on the web.

- the image or resource without an extension

Internet Services looks in the pictures.rez file (for legacy resources).



### Notes

We recommend that you always put an extension on images or other resources.

You can't have an object called Pictures, because the name is reserved for the pictures.rez file.

- by a fully qualified path in your document, for example, <http://www.ads.com/myads/Image1.gif>.

[Top](#)

## Testing your customization

After you have completed the .sitepref form, test your customization by viewing your account on a web browser. If you find that you are caching old information, click Flush on the Control-HTTP tab of the Internet Services Monitor.

[Top](#)